

# VULCAN

## CATALOG OF REPLACEMENT PARTS

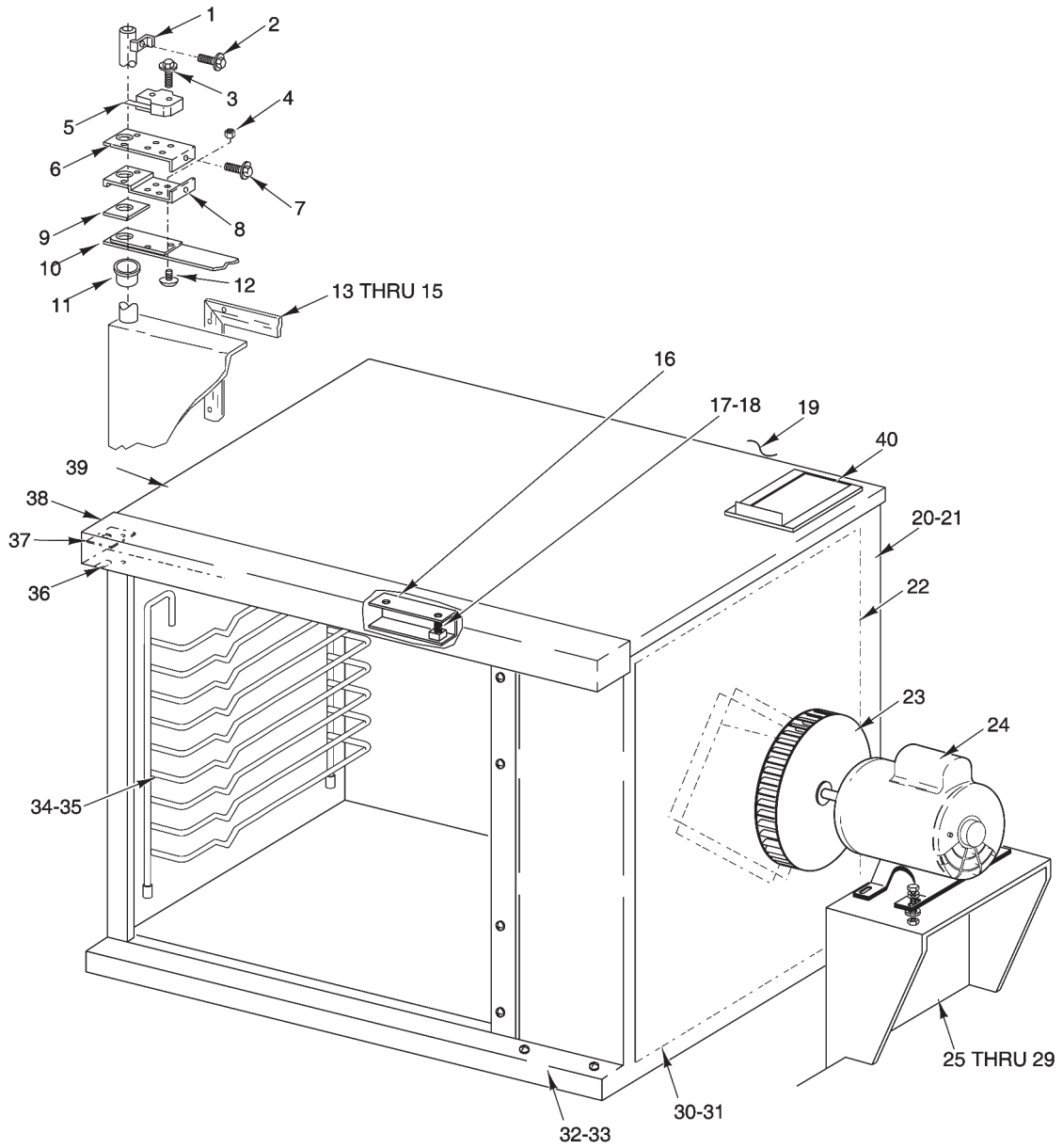
### HALF SIZE ELECTRIC CONVECTION OVENS

*MODEL*

ML-114570    ECO2D  
ML-114572    ECO2C



For additional information on Vulcan-Hart or to locate an authorized parts and service provider in your area, visit our website at [www.vulcanhart.com](http://www.vulcanhart.com)

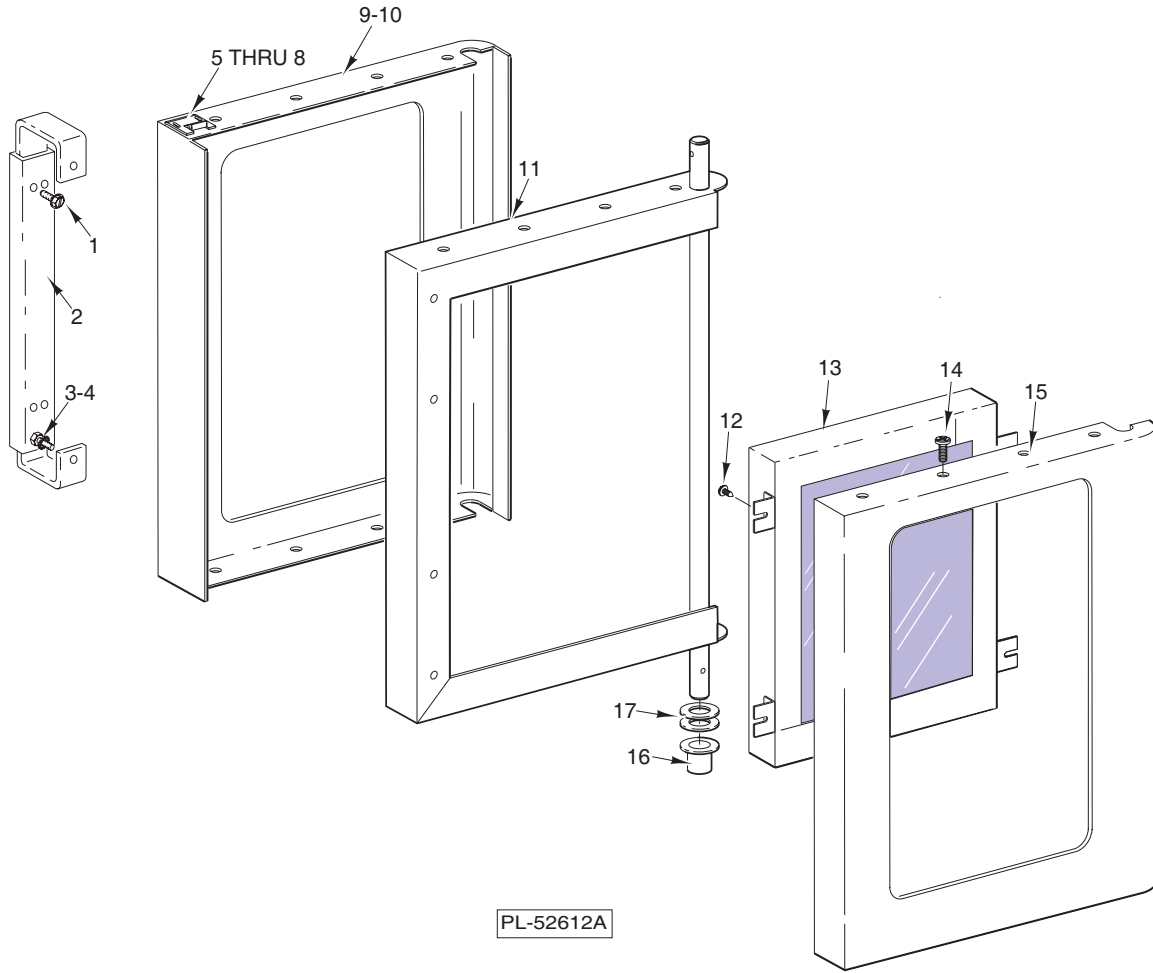


PL-52611A

**CABINET**

## CABINET

ILLUS. PL-52611A	PART NO.	NAME OF PART	AMT.
1	00-427855-00001	Striker-Door Switch .....	1
2	SD-034-52	Self-Tapping Screw 8-32 x 1 Hex Washer Hd., Type T .....	1
3	SD-034-47	Self-Tapping Screw 6-32 x 1 Hex Washer Hd., Type T .....	2
4	NS-046-52	Nut - 1/4-20 Hex "Keps" .....	2
5	00-353782-00001	Switch-Door (Prior to August 2001) .....	1
	00-411496-000F1	Switch-Door (August 2001 to Present) .....	1
6	00-353780-00001	Bracket-Switch (Prior to August 2001) .....	1
	00-426854-00001	Bracket-Switch (August 2001 to Present) .....	1
7	SD-036-30	Self-Tapping 8-32 x 1/4 Slotted Hex Washer Hd., Type T .....	1
8	00-353778-00001	Support-Switch (Prior to August 2001) .....	1
9	00-353482-00001	Spacer .....	1
10	00-353483-00002	Plate-Door (3 Holes) .....	1
11	00-347080-00002	Bearing - Door Shaft .....	1
12	SC-022-40	Mach. Screw 1/4-20 x 3/4 Phil. Flat Hd. ....	2
13	00-423281-00001	Seal-Door (RH or LH Side) .....	2
14	00-423280-00001	Seal-Door (Top & Bottom) .....	2
15	SD-034-05	Self-Tapping Screw 6-20 x 3/8 Phil. Pan Hd., Type AB .....	16
16	00-355344	Channel - Latch (Prior to December 1997) .....	1
17	00-417810-00003	Spring - Compression (Prior to December 1997) .....	1
18	00-411794-00001	Catch - Door (Prior to December 1997) .....	1
	00-347545-00001	Catch - Door (December 1997 to present) .....	1
19	00-354476-00002	Back (SST) .....	1
20	00-422715-00002	Panel-Side (RH)(SST) .....	1
21	00-422724-00002	Panel-Side (LH)(SST) .....	1
22	00-347565-00001	Insulation Retainer Assy. ....	1
23	00-354262-00001	Blower .....	1
24	00-358516-00002	Motor .....	1
25	00-347786-00002	Motor Mount Assy. ....	1
26	SC-116-84	Cap Screw 5/16-18 x 1 1/8 Hex Hd. ....	4
27	WS-029-46	Washer .....	4
28	NS-046-86	Nut Assy. 5/16-18 "KEPS" Hex .....	4
29	00-358723-00001	Spacer - Steel .....	2
30	00-360869-000G1	Blower Baffle Weldment (Enamel) .....	1
31	00-360869-000G2	Blower Baffle Weldment (SST) .....	1
32	00-422714-00001	Cover-Lower .....	1
33	00-422592-00001	Sill Door .....	1
34	00-347498-00003	Guide-Rack (LH) .....	1
35	00-347498-00004	Guide-Rack (RH) .....	1
36	00-422590-00001	Support-Door Upper Reversible .....	1
37	00-422588-00001	Plate-Cover .....	1
38	00-347593-00001	Cover-Top .....	1
39	00-422595-00002	Top (SST) .....	1
40	00-354482-00001	Vent Extension .....	1
	FE-023-56	Bushing, Motor .....	1

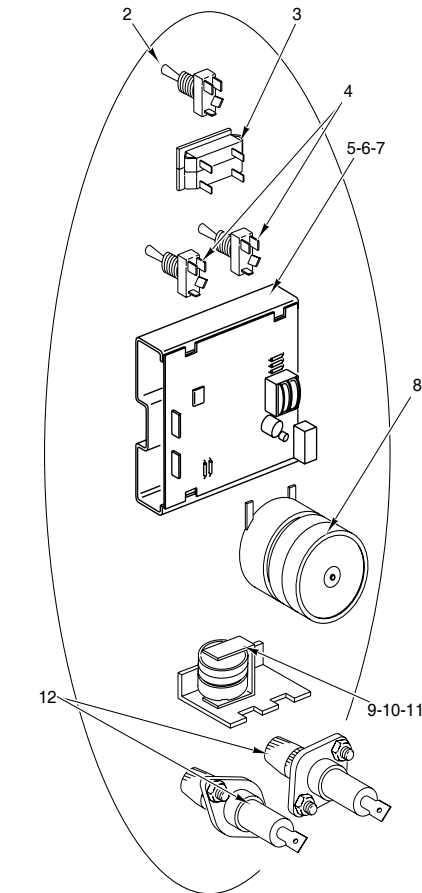
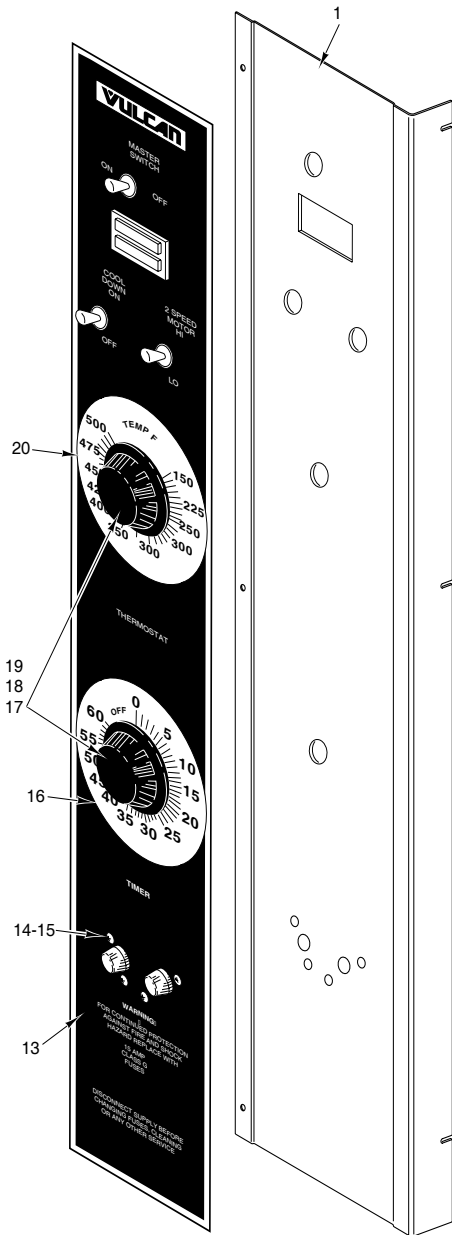


PL-52612A

**DOOR**

**DOOR**

ILLUS. PL-52612A	PART NO.	NAME OF PART	AMT.
1	SC-113-98	Self-Tapping Screw 10-16 x 1/2 Hex Washer Hd., Type AB .....	4
2	00-357929-00002	Door Handle Assy .....	1
3	SC-053-41	Mach. Screw 1/4-20 x 1/2 Truss Hd. SST .....	2
4	WL-013-14	Lockwasher 1/4 Internal Shakeproof .....	2
5	00-423848-00001	Shim - Door Strike .....	2
6	00-423847-00001	Strike - Door .....	2
7	00-350543-00006	Mach. Screw 10-32 x 1/2 Phil. Pan Hd. ....	2
8	WL-019-35	Lockwasher 10 Int .....	2
9	00-360887-00001	Panel-Outer Door (W/Window) .....	1
10	00-350543-00006	Mach. Screw 10-32 x 1/2 Phil. Pan Hd. ....	20
11	00-359703-000G1	Door Frame Assy. ....	1
12	SD-034-62	Self-Tapping Screw 10-32 x 1/2 Hex Washer Hd., Type T .....	1
13	00-358534-00001	Window Assy. ....	7
14	00-350543-00006	Mach. Screw 10-32 x 1/2 Phil. Pan Hd. ....	1
15	00-360889-000G1	Panel-Inner Door (W/Window) .....	1
16	00-347080-00002	Bearing - Door Shaft .....	1
17	00-343143-00001	Washer .....	2
	00-360886-000G1	Door Assy	



CONTROL PANEL COMPONENTS VIEWED FROM BACK OF PANEL.

Old Style

PL-52386

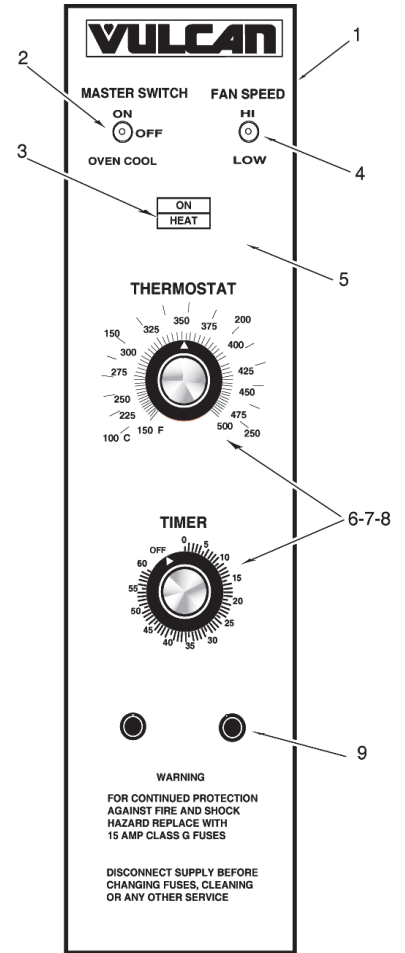


Fig. 1

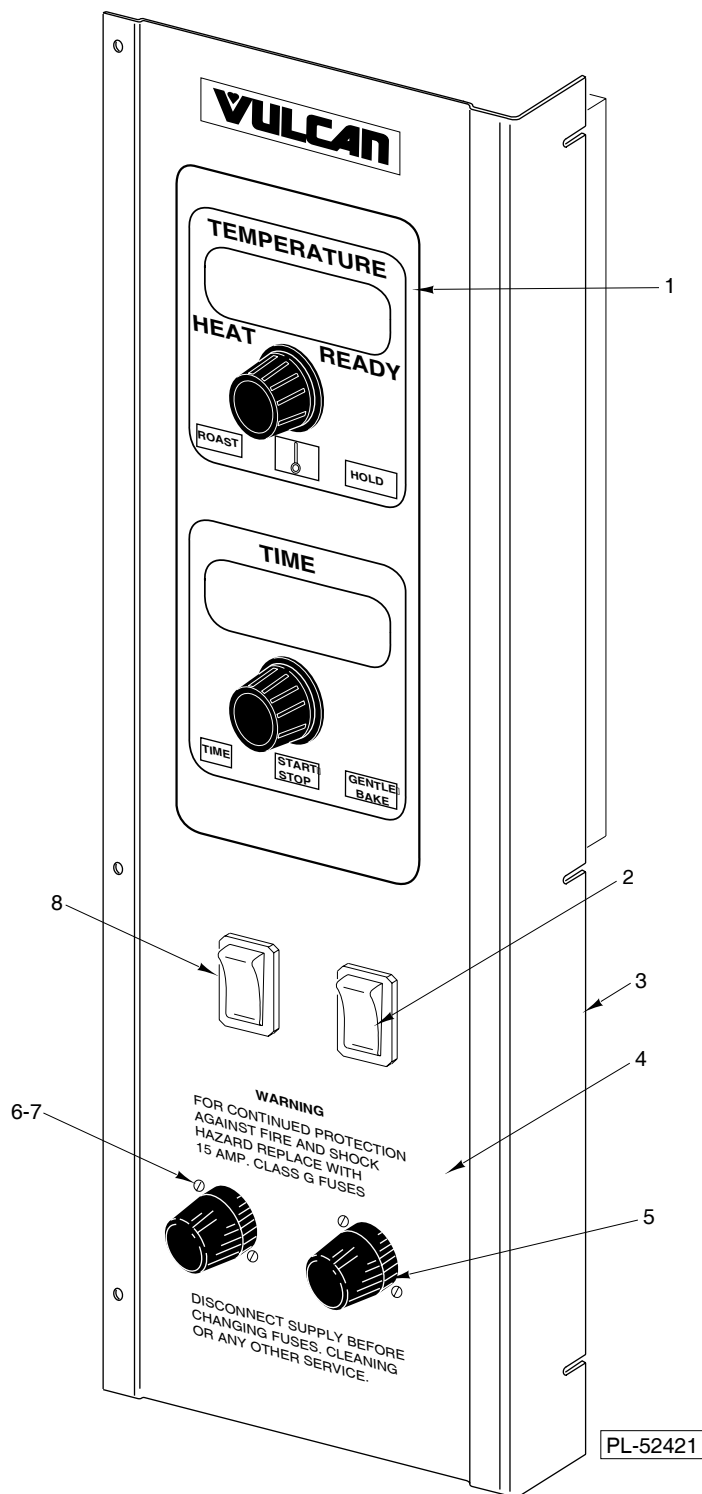
New Style

CONTROL PANEL (ECO2D)

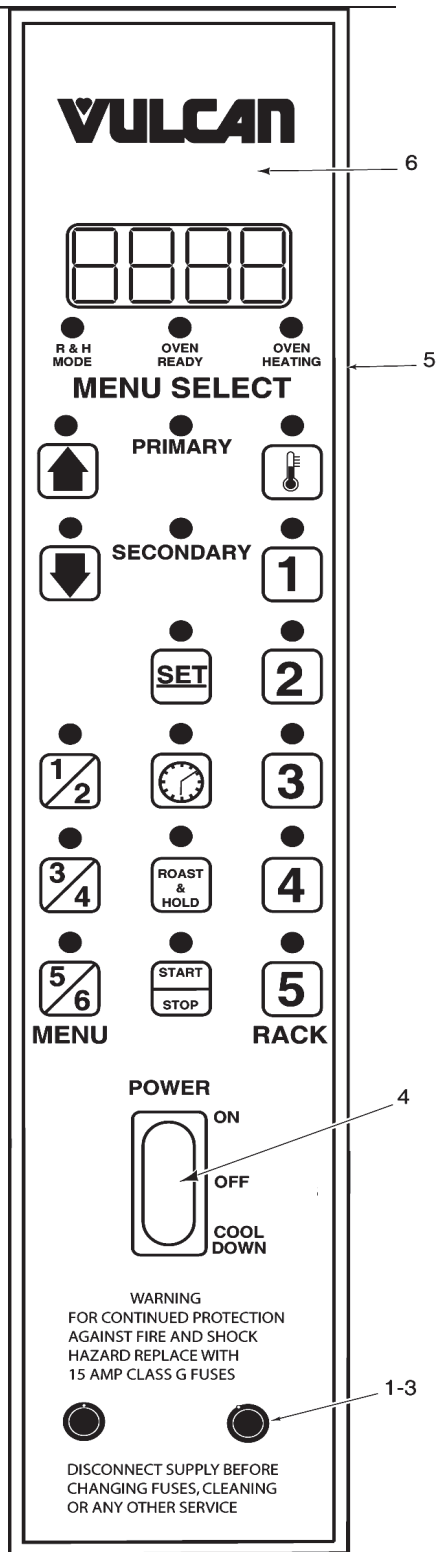
## CONTROL PANEL (ECO2D)

ILLUS. PL-52386	PART NO.	NAME OF PART	AMT.
1	00-422560-000G1	Panel-Control (Prior to February 2003) .....	1
2	00-340324-00006	Switch (D.P.S.T.) (Prior to February 2003) .....	1
3	00-354575-00001	Light Indicator (On/Heat) (200-240V) .....	1
4	00-340324-00009	Switch (D.P.D.T.) .....	2
5	00-353613-00002	Controller - Temperature .....	1
6	SC-114-83	Mach. Screw 6-32 x 1/4 Pan Hd. ....	2
7	WS-028-20	Washer .....	2
8	00-411690-00002	Timer (200-240 V.)(1 Hr.) .....	1
9	00-411499-00003	Buzzer (230 V.) .....	1
10	SD-034-49	Self-Tapping Screw 8-32 x 1/2 Hex Washer Hd., Type T .....	1
11	WL-014-10	Lockwasher 1/4 Ext. "Shakeproof" .....	1
12	FE-023-55	Holder - Fuse .....	2
	FE-019-40	Fuse .....	1
13	00-360881-00001	Overlay-Control Panel (Prior to February 2003) .....	1
14	SC-114-27	Mach. Screw 8-32 x 1/2 Phil. Pan Hd. ....	4
15	NS-046-51	Nut Assy. 8-32 Hex .....	4
16	00-358538-00001	Plate - Dial Timer (Prior to February 2003) .....	1
17	00-411242-00001	Knob .....	2
18	SC-114-83	Mach. Screw 6-32 x 1/4 Pan Hd. ....	2
19	WS-028-20	Washer .....	2
20	00-358539-00001	Plate - Temperature Dial (Fahrenheit) .....	1
	00-353589-00001	Probe Assy. ....	1

ILLUS. Fig. 1	PART NO.	NAME OF PART	AMT.
1	00-428131-000G1	Control Panel Weldment .....	1
2	00-340324-00008	Master Switch (D.P.D.T.) .....	1
3	00-354575-00001	Light Indicator (On/Heat) (200-240V) .....	1
4	00-340324-00009	Switch (D.P.D.T.) .....	2
5	00-428125-00001	Overlay-Control Panel (February 2003 to present) .....	1
6	00-411242-00001	Knob .....	2
7	SC-114-83	Mach. Screw 6-32 x 1/4 Pan Hd. ....	2
8	WS-028-20	Washer .....	2
9	FE-023-55	Holder - Fuse .....	2
	FE-019-40	Fuse .....	1



Old Style



New Style

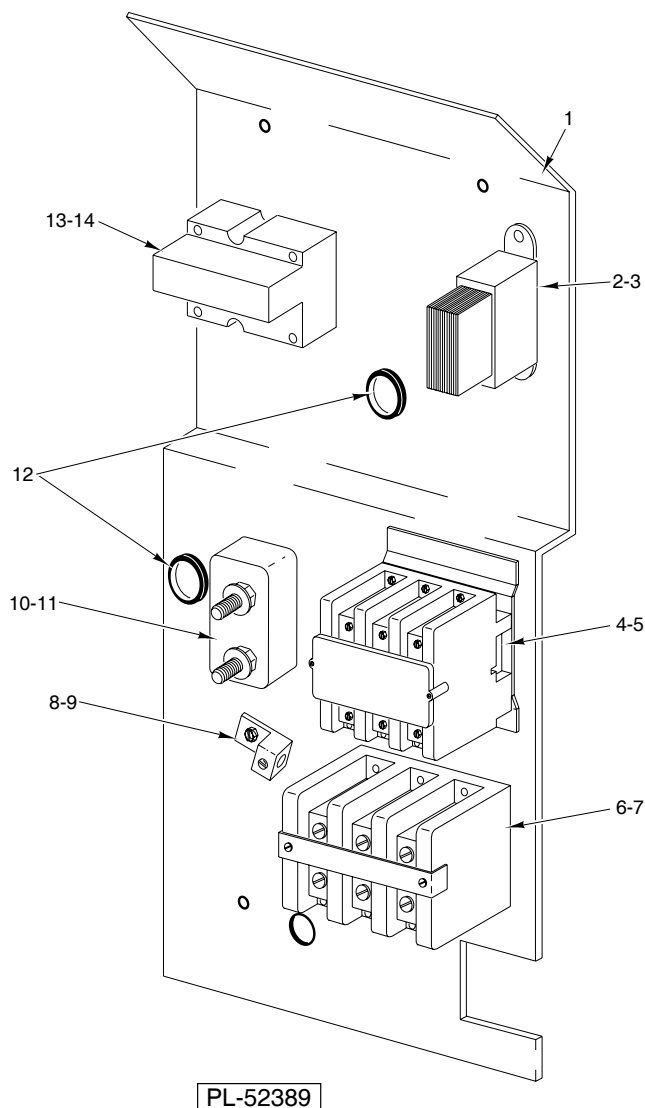
Fig. 2

**CONTROL PANEL (ECO2C)  
COMPUTERIZED CONTROLS**

**CONTROL PANEL (ECO2C)  
COMPUTERIZED CONTROLS**

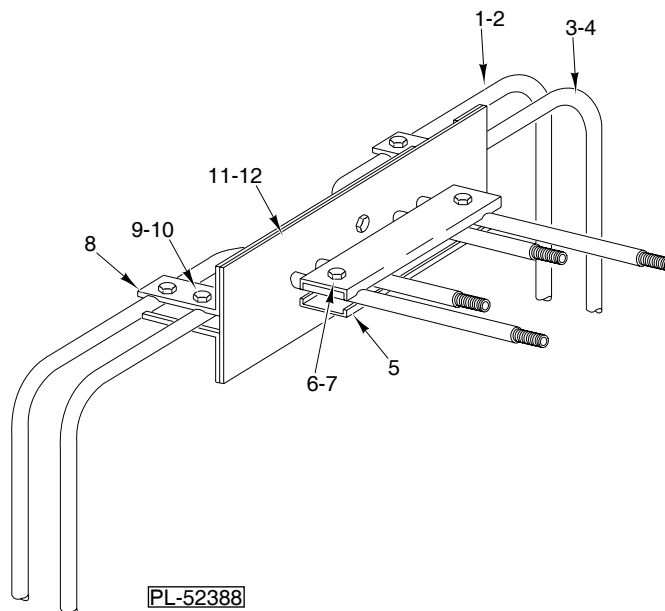
ILLUS. PL-52421	PART NO.	NAME OF PART	AMT.
1	00-355903-00004	Controller W/Cook, Hold & Pulse (Prior to November 1999) .....	1
2	00-358628-00002	Switch - Rocker (2 Position) (Prior to November 1999) .....	1
3	00-422585-000G1	Panel-Control (Prior to November 1999) .....	1
4	00-422584-00001	Overlay .....	1
5	FE-023-55	Fuse Holder .....	2
	FE-019-40	Fuse .....	2
6	SC-114-83	Mach. Screw 6-32 x 1/4 Pan Hd. ....	4
7	WS-028-20	Washer .....	4
	00-920883-00002	Probe - Thermocouple W/40" Leads (Prior to October 1999) .....	1
	00-424841-00001	Guard-Thermo .....	1

ILLUS. Fig. 2	PART NO.	NAME OF PART	AMT.
1	FE-023-55	Fuse Holder .....	2
	FE-019-40	Fuse .....	2
2	SC-114-83	Mach. Screw 6-32 x 1/4 Pan Hd. ....	4
3	WS-028-20	Washer .....	4
4	00-358628-00001	Switch - Rocker (3 Position) .....	1
5	00-426694-00001	Control Panel Weldment (October 1999 to present) .....	1
6	00-426698-00001	Overlay (October 1999 to [present) .....	1
	00-920883-00003	Probe - Thermocouple (October 1999 to present) .....	1
	00-424846-00001	Watlow 734 Controller (October 1999 to present) .....	1
	00-423918-00001	Electronic Buzzer (October 1999 to present) .....	1



### COMPONENT PANEL

ILLUS. PL-52389	PART NO.	NAME OF PART	AMT.
1	00-422712-00001	Panel-Component .....	1
2	00-358629-00001	Transformer-Controls (ECO2C) (Prior to November 1999) .....	1
3	SD-034-49	Self-Tapping Screw 8-32 x 1/2 Hex Washer Hd., Type T .....	2
4	00-411497-000C5	Contactor 3 pole .....	1
5	SD-034-49	Self-Tapping Screw 8-32 x 1/2 Hex Washer Hd., Type T .....	2
6	00-410472-00008	Terminal Block .....	1
7	SD-034-49	Self-Tapping Screw 8-32 x 1/2 Hex Washer Hd., Type T .....	2
8	00-417856-00001	Lug - Grounding (With Set Screw) .....	1
9	SD-034-49	Self-Tapping Screw 8-32 x 1/2 Hex Washer Hd., Type T .....	2
10	00-417934-000G1	Porcelain - Block Assy. ....	2
11	SD-034-52	Self-Tapping Screw 8-32 x 1 Hex Washer Hd., Type T .....	2
12	FE-016-32	Bushing-Snap (Electrical) .....	2
13	00-821875-00002	Relay-Solid State 50A (ECO2C) .....	1
14	SD-034-49	Self-Tapping Screw 8-32 x 1/2 Hex Washer Hd., Type T .....	2
	00-421758-000G4	Transformer Assy (November 2002 to present)	
	00-411500-00013	Transformer (November 1999 to present) (Used in 421758-G4)	



**ELECTRIC HEATERS**

ILLUS. PL-52388	PART NO.	NAME OF PART	AMT.
1	00-351393-00002	Heater Unit Assy. (Outer)(208V) .....	1
2	00-351393-00004	Heater Unit Assy. (Outer)(240V) .....	1
3	00-351393-00001	Heater Unit Assy. (Inner)(208V) .....	1
4	00-351393-00003	Heater Unit Assy. (Inner)(240V) .....	1
5	00-342131-00001	Clamp-Large .....	2
6	SC-114-02	Mach. Screw 10-32 x 3/4 Slotted Hex Washer Hd. ....	2
7	NS-046-88	Nut Assy. 10-32 HEX "KEPS" .....	2
8	00-342133-00001	Clamp-Small .....	6
9	SC-114-02	Mach. Screw 10-32 x 3/4 Slotted Hex Washer Hd. ....	6
10	NS-046-88	Nut Assy. 10-32 HEX "KEPS" .....	6
11	00-347430-00001	Seal Plate Assy. ....	1
12	00-342145-00001	Plate .....	1
	00-347563-00001	Cover-Heater Unit .....	1
	00-347494-00001	Heater Assy. (208V)(Incls items 1, 3, 5 Thru 8) .....	1
	00-347494-00002	Heater Assy. (240V)(Incls. items 2, 4 & 5 Thru 12) .....	1

**OPTIONS AND ACCESSORIES**

ILLUS.	PART NO.	NAME OF PART	AMT.
PL-52418	00-347498-00003	Guide-Rack (LH) .....	1
	00-347498-00004	Guide-Rack (RH) .....	1
	00-347497-00002	Rack .....	AR
	00-340445-00002	Leg - Adjustable (6") .....	4
	00-348164-00001	Leg - Adjustable (4") .....	4
	00-341655-00006	Caster - 6" High (Swivel)(W/Brake) .....	2
	00-341655-00007	Caster - 6" High (Rigid) .....	2
	00-347798-00001	Stand Assy. ....	1
	00-342150-00006	Leg Assy (For Stacked Units) .....	4
	00-342150-00007	Leg Assy (For Stacked Units) .....	4

**RECOMMENDED SPARE PARTS**

<b>PART NO.</b>	<b>NAME OF PART</b>	<b>AMT.</b>
00-353589-00001	Probe Assy "D" Model .....	2
00-358516-00002	Motor .....	1
00-411499-00003	Buzzer, 230V "D" Model .....	2
00-411497-000C5	Contactora, 3-pole .....	2
00-821875-00002	50-amp Relay .....	2
00-411496-000F1	Door Switch .....	2
00-347545-00001	Door Catch .....	2
00-423847-00001	Door Strike .....	2
00-340324-00008	Hold Switch "D" Model .....	2
00-340324-00009	Switch (D.P.D.T.) "D" Model .....	2
00-353613-00002	Temperature Controller "D" Model .....	2
00-411690-00002	Timer, 208V / 240V "D" Model .....	2
00-351393-00001	Element, 208V Inner .....	2
00-351393-00003	Element, 240V Inner .....	2
00-351393-00002	Element, 208V Outer .....	2
00-351393-00004	Element, 240V Outer .....	2
FE-023-55	Fuse Holder .....	2
FE-019-40	15-amp Fuse, 300V .....	4
00-411500-00013	Transformer .....	1
00-920883-00003	Thermocouple "C" Model .....	2
00-424846-00001	Watlow Controller "C" Model .....	1